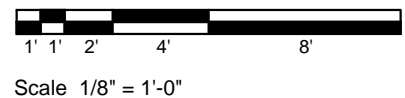
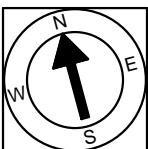


Second Floor Plan
Ceiling Height = 8'-10"

355 Highland Avenue
Somerville, MA 02144



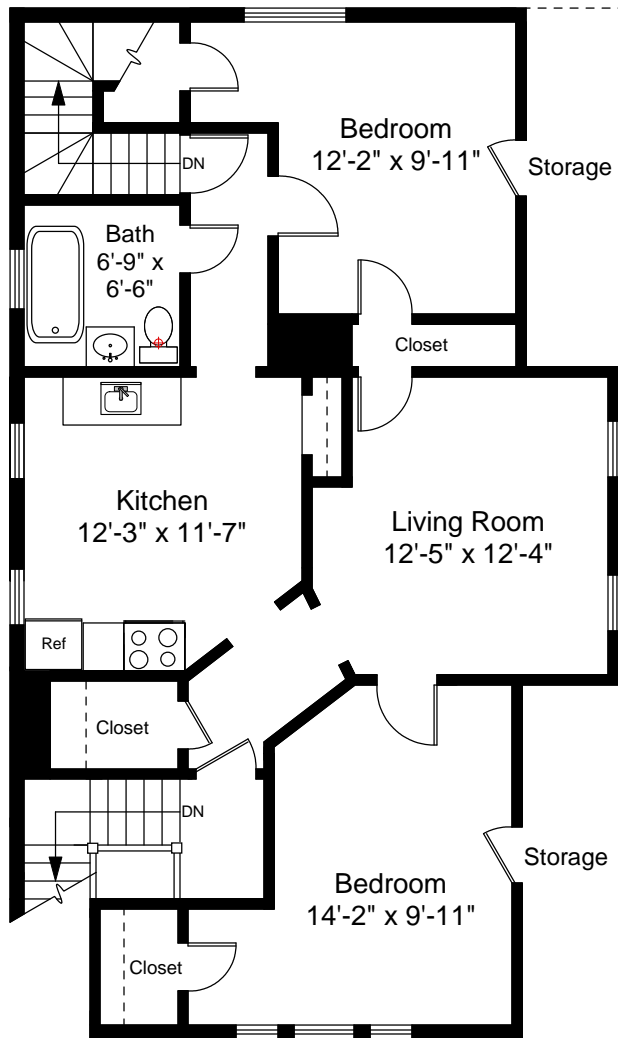
2



Completed: July, 2010

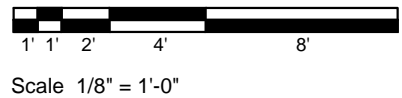
Note: Dimensions are not
guaranteed and are provided
for informational purposes only.


NEW ENGLAND
—FLOOR PLANS—
& PHOTOGRAPHY
(800) 328-0217

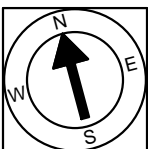


Third Floor Plan
Ceiling Height = 7'-10"

355 Highland Avenue
Somerville, MA 02144



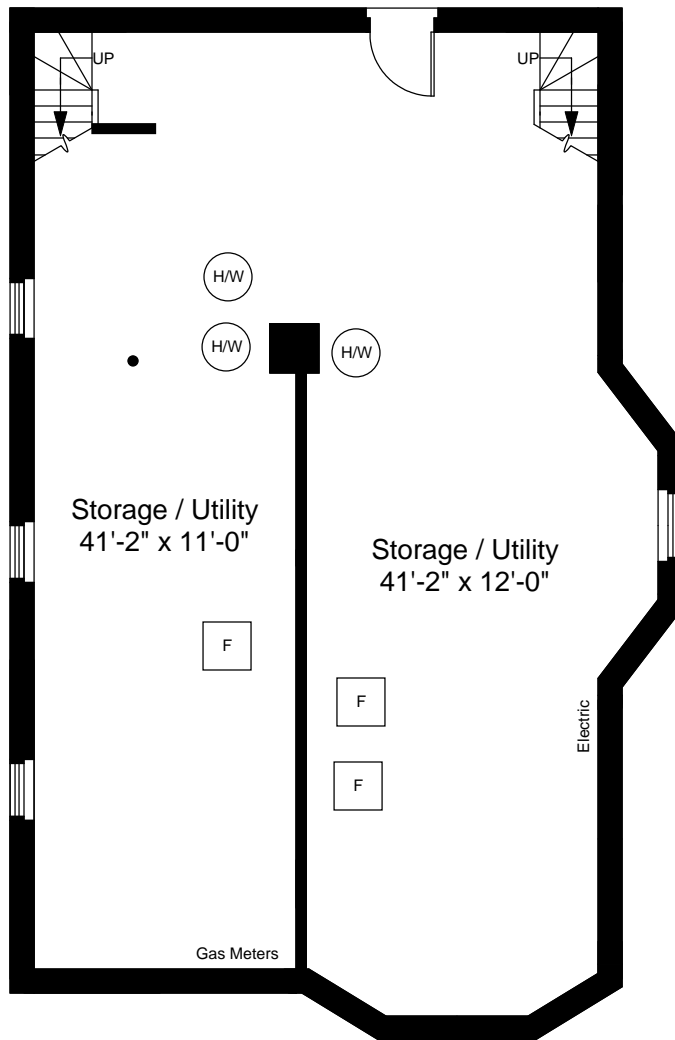
3



Completed: July, 2010

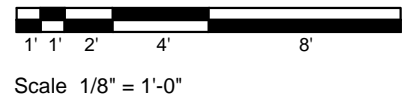
Note: Dimensions are not
guaranteed and are provided
for informational purposes only.


NEW ENGLAND
—FLOOR PLANS—
& PHOTOGRAPHY
(800) 328-0217

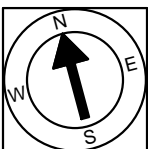


Basement Floor Plan
Ceiling Height = 6'-9"

355 Highland Avenue
Somerville, MA 02144



4



Completed: July, 2010

Note: Dimensions are not
guaranteed and are provided
for informational purposes only.

NEW ENGLAND
— FLOOR PLANS —
& PHOTOGRAPHY
(800) 328-0217